



**Empowering Productivity, Enhancing Efficiency**

**Your Office Equipment Partner**

# **PRODUCT CATALOGUE**

# ABOUT US

At Atlas Business Solutions Inc. we are dedicated to providing our customers with high-quality products and services that help them improve their operational efficiency and productivity.

Our team of experts are highly trained and certified, possessing a wealth of knowledge and experience in the office equipment industry. Our solutions are tailored to meet the dynamic and unique needs of our customers.

We believe that customer satisfaction is key to our success. We are committed to providing our customers with the best possible service and support, and we are dedicated to building long-term relationships with our customers. We are constantly looking for new and innovative ways to help our customers succeed.

# OUR SERVICES



**EQUIPMENT SALES & INSTALLATION**



**MANAGED PRINT SERVICES**



**SERVICE MAINTENANCE CONTRACTS**



**DIGITIZING AND ARCHIVING**




**AFTER-SALE SERVICE & REPAIRS**



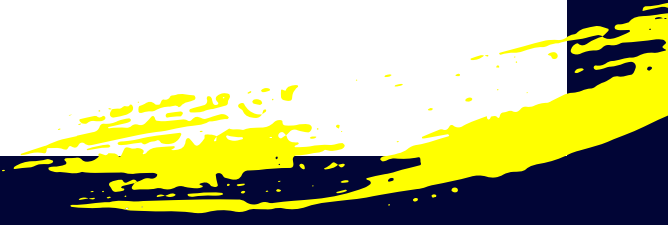
**SUPPLIES AND PARTS**

# OUR SOLUTIONS

- MULTIFUNCTIONAL PRINTERS
- WIDE FORMAT PRINTERS
- SCANNERS
- POWER PROTECTION
- INTERACTIVE WHITEBOARDS
- PROJECTORS
- SHREDDERS
- CURRENCY COUNTERS
- LABEL MACHINES
- LAMINATORS
- BINDING MACHINES
- GUILLOTINE



# **MULTIFUNCTIONAL PRINTERS**



# A3 COLOR DEVICES

## ECOSYS M8130cidn

This device combines exceptional business color and superior functionality with low total cost of ownership. These MFPs come standard with one paper tray and can be positioned on your desk or configured with additional paper trays and stand with wheels.



### KEY FEATURES:

- High speeds up to 30 ppm b&w / 30 ppm color
- 7" color TSI - intuitive user interface
- High quality output up to 1200 x 1200 dpi
- Standard Paper Capacity: 600 sheets (Upgradable to 1,600 sheets)
- Paper Size: 5.5" x 8.5" - 11" x 17"
- Standard Wireless LAN, Wi-Fi Direct
- Average Monthly Volume: 4,000 pages
- Maximum Monthly Volume: 100,000 pages
- Scan to Folder / Scan to Email

# A3 COLOR DEVICES

## TASKalfa 2554ci Series

Minimize downtime and optimize workflows with this speedy color MFP. Enjoy unbeatable reliability, flexibility, and consistency at 25 or 35 pages per minute. These MFPs come standard with two paper trays and stand with wheels. It can be configured to add two additional paper trays. Additional features include Large Capacity Paper tray and a range of Professional Finishing options such as, Regular Stapling, Booklet Stapling and Punching.



### KEY FEATURES: 2554ci

- High speeds up to 25 ppm b&w / 25 ppm color
- 10.1" color TSI - intuitive user interface
- Resolutions: Up to 4800 x 1200 dpi
- Standard Paper Capacity: 1,150 sheets
- Paper Size: 5.5" x 8.5" - 11" x 17"
- Average Monthly Volume: 4,000 - 6,000 pages
- Maximum Monthly Volume: 100,000 pages
- Scan to Folder / Scan to Email

**Note: This TASKalfa series can be upgraded to 35 pages per minute**

# A3 COLOR DEVICES

## TASKalfa 7054ci Series

Minimize downtime and optimize workflows with this speedy color MFP. Enjoy unbeatable reliability, flexibility, and consistency. These MFPs come standard with two paper trays and stand with wheels. It can be configured to add two additional paper trays. Additional features include Large Capacity Paper tray and a range of Professional Finishing options such as, Regular Stapling, Booklet Stapling and Punching.



### KEY FEATURES: 4054ci

- High speeds up to 40 ppm b&w / 40 ppm color
- 10.1" color TSI - intuitive user interface
- Resolutions: Up to 4800 x 1200 dpi
- Standard Paper Capacity: 1,150 sheets
- Paper Size: 5.5" x 8.5" - 12" x 18"
- Average Monthly Volume: 6,000 - 8,000 pages
- Maximum Monthly Volume: 175,000 pages
- Scan to Folder / Scan to Email
- Optional EFI Fiery Printing System
- Eco Friendly

**Note: The TASKalfa series include speeds of 50, 60 and 70 pages per minute**



# A4 COLOR DEVICES

## ECOSYS M5526cdw

The ECOSYS M5526cdw is a versatile color network MFP designed for small workgroups and individual users that seek maximum productivity, reliability and affordability. This desktop MFP comes standard with one paper tray and can be configured with an additional paper tray.



### KEY FEATURES:

- Speed: 27 ppm b&w / 27 ppm color
- 4.3" color TSI - intuitive user interface
- High quality output up to 1200 x 1200 dpi
- Standard Paper Capacity: 300 sheets (Upgradable to 550 sheets)
- Paper Size: 5.5" x 8.5" - 8.5" x 14"
- Standard Wireless & Wi-Fi Direct
- Recommended Monthly Volume: 1,000 - 1,500 pages
- Maximum Monthly Volume: 65,000 pages
- Scan to Folder / Scan to Email

# A4 COLOR DEVICES

## ECOSYS M6630cidn

The ECOSYS M6630cidn copy, color scan, fax and optional finishing solution with speeds up to 32 ppm, is the product of choice for small-medium sized businesses and workgroups. This desktop MFP comes standard with one paper tray and can be configured with an additional paper tray(s) and stand. Additional accessories include a manual stapler.



### KEY FEATURES:

- Speed: 32 ppm b&w / 32 ppm color
- 7" color TSI - intuitive user interface
- Print Resolution: 1200 x 1200 dpi
- Standard Paper Capacity: 350 sheets (Upgradable to 1,850 sheets)
- Paper Size: 5.5" x 8.5" - 8.5" x 14"
- Network Printing with optional Wireless
- Average Monthly Volume: 2,000 - 4,000 pages
- Maximum Monthly Volume: 100,000 pages
- Scan to Folder / Scan to Email
- Eco Friendly

# A4 COLOR DEVICES

## BROTHER MFC-L3750CDW



The Brother MFC-L3750CDW digital color all-in-one delivers duplex printing, print speeds up to 25ppm and 50-sheet automatic document feeder. 250-sheet adjustable paper tray means fewer refills. Connect via built-in wireless, Ethernet or USB interfaces. Print wirelessly from mobile devices. Create custom shortcuts on the 3.7" color touchscreen and print-from and scan-to from popular cloud apps.

### KEY FEATURES:

- Speed: 25 ppm b&w / 25 ppm color
- 3.7" color touchscreen display
- Print Resolution: up to 600 x 2400 dpi
- Standard Paper Capacity: 250 sheets
- Paper Size: up to 8.5" x 14"
- Wireless Printing / USB Printing
- Average Monthly Volume: 1,500 - 2,000 pages
- Maximum Monthly Volume: 30,000 pages
- Scan to Folder / Scan to Email

# A4 COLOR DEVICES

## BROTHER MFC-L8900CDW



The Brother MFC-L8900CDW color laser all-in-one printer is a great choice for workgroups with higher print volumes that need low cost printing, easy scanning, secure document handling and reliable, business quality output. This high-performance all-in-one helps to increase your productivity with fast print speeds up to 31ppm, and scan speeds for double-sided pages up to 56ipm.

### KEY FEATURES:

- **Speed: 31 ppm b&w / 31 ppm color**
- **5" color touchscreen display**
- **Print Resolution: up to 600 x 2400 dpi**
- **Standard Paper Capacity: 300 sheets**
- **Paper Size: up to 8.5" x 14"**
- **Wireless Printing / USB Printing**
- **Average Monthly Volume: 4,000 - 4,500 pages**
- **Maximum Monthly Volume: 60,000 pages**
- **Scan to Folder / Scan to Email /USB**

# MULTIFUNCTIONAL PRINTERS

## A3 BLACK & WHITE DEVICES

### ECOSYS M4132idn

The ECOSYS M4132idn brings high-level functionality and quality black and white output to offices and workgroups looking for a MFP with a small footprint. These MFPs come standard with one paper tray and can be positioned on your desk or configured with additional paper trays and stand with wheels.



#### KEY FEATURES:

- High speeds up to 32 ppm b&w (color scan)
- 7" color TSI - intuitive user interface
- High quality output up to 1200 x 1200 dpi
- Standard Paper Capacity: 600 sheets (Upgradable to 1,600 sheets)
- Paper Size: 5.5" x 8.5" - 11" x 17"
- Standard Wireless LAN, Wi-Fi Direct
- Average Monthly Volume: 4,000 - 6,000 pages
- Maximum Monthly Volume: 100,000 pages
- Scan to Folder / Scan to Email

# A3 BLACK & WHITE DEVICES

## TASKalfa MZ4000i SERIES

A reliable multifunctional printer that offers high-quality printing, versatile paper handling, advanced scanning capabilities and enhanced security features. It is designed to optimize productivity and meet the demanding needs of modern businesses. These MFPs come standard with two paper trays and stand with wheels. It can be configured to add two additional paper trays. Additional features include Large Capacity Paper tray and a range of Professional Finishing options such as, Regular Stapling, Booklet Stapling and Punching.



### KEY FEATURES: MZ3200i

- Speed: Up to 32 ppm b&w (color scan)
- 10.1" color TSI - intuitive user interface
- Resolution: Up to 1200 x 1200 dpi
- Standard Paper Capacity: 1,100 sheets
- Paper Size: 5.5" x 8.5" - 11" x 17"
- Average Monthly Volume: 4,000 - 6,000 pages
- Maximum Monthly Volume: 150,000 pages
- Scan to Folder / Scan to Email

**Note: This TASKalfa series can be upgraded to 40 pages per minute**

# A3 BLACK & WHITE DEVICES

## TASKalfa 7004i Series

These devices offer high-speed printing, exceptional print quality, versatile paper handling, advanced scanning capabilities and enhanced security features. It is designed to optimize productivity, streamline document workflows and meet the demanding needs of modern businesses. These MFPs come standard with two paper trays and stand with wheels. It can be configured to add two additional paper trays. Additional features include Large Capacity Paper tray and a range of Professional Finishing options such as, Regular Stapling, Booklet Stapling and Punching.



### KEY FEATURES: 4004i

- Speed: Up to 40 ppm b&w (color scan)
- 10.1" color TSI - intuitive user interface
- Print Resolution: 1200 x 1200 dpi
- Standard Paper Capacity: 1,150 sheets
- Paper Size: 5.5" x 8.5" - 12" x 18"
- Average Monthly Volume: 5,000 - 7,000 pages
- Maximum Monthly Volume: 400,000 pages
- Scan to Folder / Scan to Email

**Note: The Taskalfa MZ include speeds of 50, 60, 70 pages per minute**

# A4 BLACK & WHITE DEVICES

## MA2000w

The MA2000w copy, print and scan solution with speeds up to 21 ppm, is the ideal choice for any home office and small-medium sized businesses.



### KEY FEATURES:

- Speed: Up to 21 ppm b&w (color scan)
- Two digits LED display
- Print Resolution: 600 x 600 dpi
- Standard Paper Capacity: 150 sheets
- Paper Size: 5.5" x 8.5" - 8.5" x 14"
- Wireless Printing / USB Printing
- Maximum Monthly Volume: 8,000 pages
- Scan to Folder / Scan to Email



# A4 BLACK & WHITE DEVICES

## ECOSYS M3145idn

The ECOSYS M3145dn black and white copy and color scan solution with speeds up to 47 ppm, is the product of choice for small-medium sized businesses and workgroups.



### KEY FEATURES:

- Speed: Up to 45 ppm b&w (color scan)
- 7" color TSI - intuitive user interface
- Print Resolution: 600 x 600 dpi
- Standard Paper Capacity: 600 sheets (Upgradable to 2,600 sheets)
- Paper Size: 5.5" x 8.5" - 8.5" x 14"
- Optional Wireless / USB Printing
- Average Monthly Volume: 3,000 - 4,000 pages
- Maximum Monthly Volume: 150,000 pages
- Scan to Folder / Scan to Email / USB

# A4 BLACK & WHITE DEVICES

## BROTHER MFC-L2750DW

The Brother MFC-L2750DW delivers full featured performance for busy home or small offices. Its class leading print speeds of up to 34 pages per minute provide increased efficiency. Wireless mobile device printing and "touch to connect" printing and scanning with NFC deliver added convenience.



### KEY FEATURES:

- Speed: Up to 34 ppm b&w (color scan)
- 2.7" color touchscreen
- Print Resolution: Up to 1200 x 1200 dpi
- Standard Paper Capacity: 251 sheets
- Paper Size: 5.5" x 8.5" - 8.5" x 14"
- Wireless Printing
- Average Monthly Volume: 2,000 pages
- Maximum Monthly Volume: 20,000 pages
- Scan to Folder / Scan to Email
- Eco Friendly

# A4 BLACK & WHITE DEVICES

## BROTHER MFC-L5900DW

The Brother MFC-L5900DW monochrome laser all-in-one printer is a great choice for offices and small workgroups looking for cost efficient output and reliable performance. Fast print and copy speeds up to 42ppm will help increase your productivity, and cost-efficient output thanks to the high-yield replacement toner cartridge will help lower your operating costs.



### KEY FEATURES:

- Speed: Up to 42 ppm b&w (color scan)
- 3.7" color touchscreen
- Print Resolution: Up to 1200 x 1200 dpi
- Standard Paper Capacity: 300 sheets
- Paper Size: Up to 8.5" x 14"
- Wireless Printing / USB Printing
- Average Monthly Volume: 3,500 pages
- Maximum Monthly Volume: 50,000 pages
- Scan to Folder / Scan to Email / USB
- Eco Friendly



# **WIDEFORMAT PRINTERS**

# CANON 11-COLOR PRO SERIES

## PHOTOGRAPHY & FINE ARTS

Built for professionals who appreciate extraordinary print quality producing a range of vibrant colors, subtle hues and deep shadows. Ideal for photographers and studios seeking to retain image sharpness, color and clarity with photo enlargements. Produce museum-quality displays, banners, indoor murals exhibit graphics and more.



### imagePROGRAF PRO-2100

#### KEY FEATURES:

- Output width: 24" wide
- Color Set: Cyan, Photo Cyan, Yellow, Magenta, Photo Magenta, Red, Blue, Photo Black, Matte Black, Gray, Photo Gray, 11 Plus Chroma Optimizer
- Maximum Print Resolution: 2400 dpi x 1200 dpi
- Intelligent Media Loading
- Remaining Media Estimation
- Built-in Printer Calibration
- Optional Multifunction Roll System
- Borderless Printing on All Sizes

**Note: PRO-4100 (44" wide) and PRO-6100 (60" wide) models also available**

# CANON 8-COLOR PRO SERIES

## GRAPHIC ARTS PRODUCTION

The S-Series production printing systems are one of Canon's fastest Graphic Arts large-format printers. Ideal for professionals seeking to increase the capacity, productivity and versatility of their large-format printing services. Improve your turnaround time by completing more jobs in a shorter timeframe and expand your services by offering a wider variety of media prints.



### imagePROGRAF PRO-4100S

#### KEY FEATURES:

- Output width: 44" wide
- Color Set: Cyan, Photo Cyan, Yellow, Magenta, Photo Magenta, Photo Black, Matte Black, Gray
- Maximum Print Resolution: 2400 dpi x 1200 dpi
- Intelligent Media Loading
- Remaining Media Estimation
- Built-in Printer Calibration
- Economy Color Mode
- Borderless Printing on All Sizes

**Note: PRO-6100S (60" wide) model also available**

# CANON 5-COLOR TM SERIES PIGMENT INK TECHNICAL DOCUMENTS & GENERAL USE

The TM Series is ideal for technical documents, CAD drawings and GIS maps. With the use of Canon's LUCIA TD water-resistant pigment ink, this wide-format printer is not only able to produce crisp lines and vivid colors but also produce posters, signage and other displays.



## imagePROGRAF TM-200

### KEY FEATURES:

- Output width: 24" wide
- Color Set: Cyan, Magenta, Yellow, Black, Matte Black
- Maximum Print Resolution: 2400 dpi x 1200 dpi
- Uses LUCIA TD water-resistant pigment ink
- Quiet operation
- Sub-Ink Tank System

**Note: TM-300 (36" wide) and TM-305 (36" wide) models also available**

# CANON 5-COLOR TA SERIES PIGMENT INK TECHNICAL DOCUMENTS & MULTIPURPOSE USE

The TA Series is a cost-efficient, user friendly solution built to stimulate workflow and productivity for small businesses. LUCIA TC pigment ink produces crisp lines and vivid colors making this ideal for technical drawings as well as outdoor signage with the ability to print on water-resistant media. These large-format printers quiet and compact and are designed to fit in small offices and cause less disruption in the workplace.



## imagePROGRAF TA-20

### KEY FEATURES:

- Output width: 24" wide
- Color Set: Cyan, Magenta, Yellow, Black, Matte Black
- Maximum Print Resolution: 2400 dpi x 1200 dpi
- Uses LUCIA TD water-resistant pigment ink
- Quiet operation
- Sub-Ink Tank System
- Optional Stand

**Note: TA-30 (36" wide) model also available**



# SCANNERS

# MOBILE SCANNERS

## BROTHER DS-640, DS-740D & DS-940DW

The Brother DS-940DW duplex and wireless compact mobile document scanner is ideally suited for on-the-go, small office/home office professionals featuring its compact, mobile design and simple workflow applications. The DS-940DW features single-pass duplex scanning and a color scan speed of up to 16ppm (a single page in as little as 4 seconds). This scanner can wirelessly scan to PC's, mobile devices, and with the Brother free iPrint&Scan app, scan to cloud services and network destinations. The DS-940DW is compatible with the way you work. Its compact size and mobility combined with fast scan speeds and image optimization features, make it a perfect fit for usage on the road, in the home or small office. Open the DSD (Desk Saving Design) scan lid on the Brother DS-940DW document scanner to reduce the space needed to operate the scanner. The Brother DSD saves up to 11 inches of desk space.



### KEY FEATURES: DS-940DW

- Speed: 16 ppm (color & mono scan)
- Print Resolution: Up to 600 x 600 dpi
- Paper Input Capacity: 1 sheet
- Paper Size: Min: 2.0" (W) x 3.4" (L) Max: Up to 8.5" (W) x 72" (L)
- Plastic Card Sizes: 3.3"(W) x 2.2" (L) -Landscape)
- Maximum Daily Scans : 100 sheets
- Wireless Scanning
- Scan to File / Scan to Email / OCR / Mobile

**Note: Options for other models available**

# DESKTOP SCANNERS

## BROTHER ADS-1200, ADS-1250W, ADS-1700W

The Brother ADS-1700W Wireless Compact Desktop Scanner offers fast document digitization through wireless networking and an easy-to-use color Touchscreen in a space-saving, portable design. It scans stacks of double-sided, color and black and white documents up to 25ppm in a single pass with its 20-page capacity auto document feeder. The ADS-1700W supports the scanning of documents, receipts and photos to multiple destinations including File, OCR, Email, Network, FTP, Cloud services, Mobile Devices and USB flash memory drive. Scan plastic cards and business cards through a dedicated card slot.



### KEY FEATURES: ADS-1700W

- Speed: 25 ppm (color & mono)
- Print Resolution: Up to 600 x 600 dpi
- Paper Input Capacity: 20 sheets
- Paper Size: Min: 2.0" (W) x 2.76" (L) Max: Up to 8.5" (W) x 34" (L)
- LCD Display: 2.8" Touchscreen
- Maximum Daily Scans : 1,000 sheets
- Wireless Scanning
- Scan to File / Scan to Email / OCR / Mobile / USB Flash

**Note: Options for other models available**

# DESKTOP SCANNERS

## BROTHER ADS-3300W & ADS-4900W

The Brother ADS-4900W Professional Desktop Scanner is designed for the way work now works - providing easy integration with existing workflows, advanced security, and improved productivity for businesses and workgroups with higher scan volumes. Equipped with fast, two-sided scanning up to 60ppm to help maximize workgroup productivity. Quickly scan via the 100-page capacity auto document feeder to help optimize efficiency and productivity. The 4.3" color touchscreen display offers easy menu navigation. Offers Triple Layer Security features to help limit document and device access and protect against network intrusions. Provides wide driver support for compatibility with existing software applications and document management systems. Enables scanning to a variety of cloud applications and is equipped with a powerful bundled software suite to create, edit, and convert scanned documents into a wide variety of file formats.



### KEY FEATURES: ADS-4900W

- Speed: 60 ppm (color & mono)
- Print Resolution: Up to 600 x 600 dpi
- Paper Input Capacity: 100 sheets
- Paper Size: Width: 50.8 - 215.9mm, Height: 50.8 - 355.6mm, Long Paper: 5,000mm
- Plastic Card: Length: 85.60mm, Width: 53.98mm
- LCD Display: 4.5" Touchscreen
- Maximum Daily Scans : 1,000 sheets
- Wireless Scanning
- Scan to File / Scan to Email / OCR / Mobile / USB Flash

**Note: Options for other models available**



# SHREDDERS



# PERSONAL SHREDDERS

## GBC PS06-02 & GBC PX10-06

Keep personal information personal with these shredders. Destroy mail and private documents. Compact and designed in several styles, personal shredders fit wherever your work happens.



### KEY FEATURES: GBC PX10-06

- Micro-Cut, security level P-4
- Shreds up to 10 sheets
- 6 Gallon Bin
- Modern interface with user friendly touch controls. Front facing shredder is optimal for placement beside the desk.
- Whisper Shred Technology ensures a quieter shredding experience, operating below 62 Db
- Front facing shredder is optimal for placement beside the desk. Auto reverse jam prevention function.
- Recessed blades prevent user injury

**Note: Options for other models available**

# MEDIUM OFFICE

## GBC SX20-08 & GBC X26-32

These shredders are ideal for use in a department or mid-size office and are powerful enough to keep up with frequent shredding needs. Keep personal and sensitive information safe. These GBC Paper Shredders has an impressive run time and high-tech anti-jam features, making it the perfect choice for the modern office.



### KEY FEATURES: GBC X26-32

- Super crosscut, security level P-4
- Shreds up to 26 sheets
- 31.7-gallon pullout waste bin with bin-full indicator
- Intelligent SelfOil™ feature extends cutter life
- Non-stop Jam Free™ red and green LED lights
- Intelligent Power Save™ conserves energy
- Shreds DVDs, CDs, credit cards, paper clips, and staples

**Note: Options for other models available**

# LARGE OFFICE/INDUSTRIAL

## GBC STACK-AND-SHRED 750X

Stack-and-Shred shredder with SmarTech revolutionizes office shredding. This auto feed shredder sends real-time status updates straight to your phone or tablet, freeing you up to do other tasks while the 750X does the work. With the easy-to-use SmarTech Shredder app, you'll be able to keep track of shredding with notifications if the shredding job is interrupted for any reason, and when shredding is completed.



### KEY FEATURES: GBC STACK-AND-SHRED 750X

- SmarTech functionality sends real-time shredding status updates to your phone via the Smartech Shredder App. Notifications include "Shredding", "Paper Jam", "Job Complete" and more.
- Administrators can manage multiple shredders at once. Real time status updates indicate if shredders are jammed, bins are full, or oil is low. The app also allows for quick reordering of supplies to simplify maintenance.
- Super cross-cut shred style has added security (Level P-4) for sensitive documents. PIN protected lockable paper chamber keeps documents secure while jobs are in progress.
- Shreds up to 750 sheets with automatic shredding and up to 12 sheets at a time during manual feed shredding
- Features a large, 31-gallon pull-out waste bin with bin full indicator and attached wheels for easy mobility
- Ultra quiet ( $\leq 60$ dB) shredder runs consecutively for 30 minutes on with 30 minutes off to ensure motor's longevity

**Note: Options for other models available**





# CURRENCY COUNTERS



# COMMERCIAL BILL COUNTER

## AB1100PLUS / AB1100PLUS UV

Stylish and compact, the new AB1100 accurately counts currency, reducing labor time and losses due to human error while providing you with the peace of mind and time to take care of other important aspects of your business. The unit is equipped with a micro-computerized mechanism that allows an accurate and high-speed money counting process -up to 1,200 bills per minute-, addition and batching capabilities. Additionally, this unit is equipped with a counterfeit detection system that checks banknote authenticity using UV verification while the unit counts. For your safety and convenience, this AccuBANKER unit is also the first to include our patented "emergency stop" feature, which, when activated, stops all operations.



### KEY FEATURES: ACCUBANKER AB1100PLUS UV

- Saves time and labor costs
- Reduces losses due to human error
- Anyone can use it
- High speed - 1200 bills/minute
- Micro-computerized for accuracy and batching
- "Emergency Stop" feature
- Integrated UV counterfeit detection systems
- Available in 110 Volt and 220 Volt versions.
- Counting dust cover included
- Reliable and sturdy

**Note: Options for other models available**

# BANK GRADE BILL COUNTER

## ACCUBANKER AB5200 / AB5800

The AB5800 is a bank grade multi-currency bill counter suitable for counting both paper and polymer bills of various currencies. This unit's special feature allows the user to obtain the total value of a batch for a selected denomination and the grand total value of all the batches counted. The user can then keep track of these values on the unit's LCD display or through detailed printed reports. The AB5800 includes a variety of optional counterfeit detection features such as ultraviolet detection, magnetic ink detection, double bill detection, and size verification. Its heavy-duty construction and 1800 bill per minute counting speed make it ideal for fast-paced, high-volume businesses. This machine also notifies its user with visual and audible alerts whenever double bill, suspicious bill size, and chained bills are detected.



### KEY FEATURES: ACCUBANKER AB5800

- Integrated batch total value calculator
- Underwriter Laboratories (UL) Certified
- Emergency Stop Function
- LCD Screen
- Suitable for paper and polymer bills (multi-currency)
- Printing capabilities
- Detailed counting reports
- Saves time and labor costs
- View counts from multiple positions with external display
- Variable counting speeds (1200-1500-1800 bills/minute)
- Integrated counterfeit detection systems (MG / UV)
- Audible and visual alerts

**Note: Options for other models available**

# MIXED BILL VALUE COUNTER

## ACCUBANKER AB7100 / AB7500

The AB7500 Dual Pocket Mixed Bill Counter with Counterfeit Detection is the perfect solution for a fast, accurate, and reliable banknote counting process that can fit any business's needs. The AB7500 is a multi-currency bill counter that provides detailed digital and printer reports of each count. This machine quickly and accurately counts bills, allowing for mixed denomination counting and final count results that show the total value as well as the number of bills involved in each count.



### KEY FEATURES: ACCUBANKER AB7500

- Reliable, Fast, Versatile and easy operation
- Suitable to count bills of mixed denomination to obtain a grand sum total
- Unique rejection pocket allows for NON-STOP counts
- FOUR count modes: **MIX, SORT, COUNT, and ORIENTATION**
- Shows TOTAL and PARTIAL results
- Counts large volumes
- Counterfeit Detection: **DD, UV, MG, IR, and MT.**
- Digital and printed reports
- Easy software update procedure when new bills are launched
- USB and Printer interface connection
- Variable counting speeds (800-1000-1200 bills/minute)
- Currency currently available for MIX mode: USD, EUR

**Note: Options for other models available**

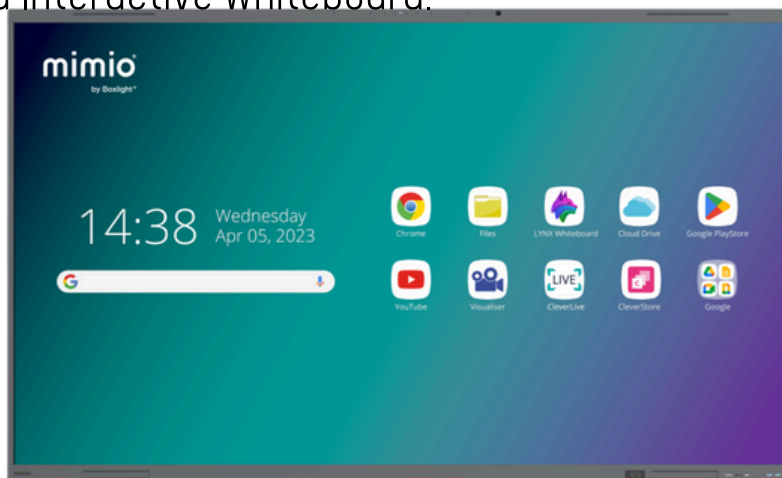


# **INTERACTIVE WHITEBOARDS**

# MIMIO by Boxlight

## MIMIO PRO G

Experience Interactive Learning like Never Before with Boxlight Mimio Pro G Interactive Whiteboard. Revolutionize your classroom or boardroom with cutting-edge technology that transforms passive presentations into dynamic, engaging experiences. With seamless touch interaction, vibrant visuals, and collaborative tools, the Mimio Pro G empowers educators and presenters to captivate audiences and enhance learning outcomes. From interactive lessons to immersive brainstorming sessions, unleash the power of collaboration and innovation with the Boxlight Mimio Pro G Interactive Whiteboard.



### KEY FEATURES: ACCUBANKER AB7500

- R
- 

**Note: Options for other models available**



# **POWER PROTECTION**





ESP provides the surge protectors, power conditioners, analytics software, and client support to keep digital equipment functioning properly while reducing service, parts, and equipment replacement costs that can impact your bottom line.

## Surge Protection & Diagnostic Solutions



## Remote Management



## Three-Phase Surge Protection



## Sag Elimination



## Stepdown Transformer





# **SURGEX**<sup>®</sup>

**Surge elimination & power conditioning**

The SurgeX suite of complete power management, surge protection and power conditioner solutions gives your business the insurance you need to keep up and running.



**Power Management**



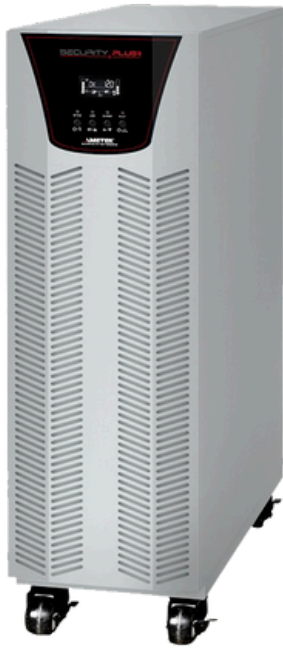
**Standalone**



**Sequencers**



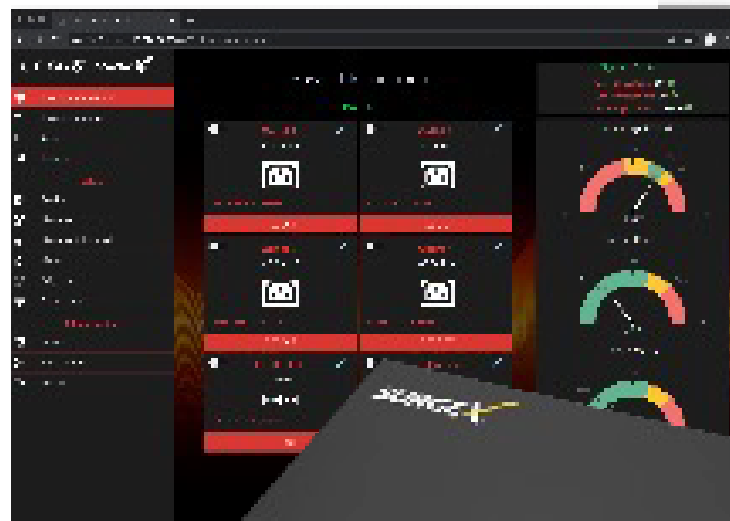
**Branch Circuit**



**Single-Phase UPS**



**Three-Phase UPS**



**Diagnostic Solutions**



Powervar's transformer-based power conditioners and uninterruptible power supplies provide complete power quality solutions to the medical, industrial, and retail technologies markets.



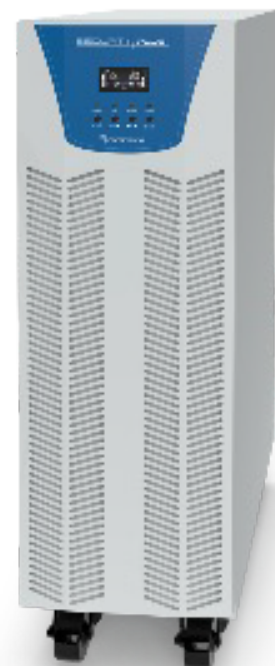
**Power Conditioner**



**Uninterruptible Power Managers**



**Single-Phase UPS**



**Three-Phase UPS**



**Local Area  
Power Centers**



**Mobile Power  
Managers**



**Connectivity Solutions**

# Contact us today to learn more.

## EMAIL ADDRESS



info@atlasbsi.com

## PHONE NUMBER



+592-667-4664

## WEBSITE



www.atlasbsi.com

## SOCIAL MEDIA



Atlas Business Solution Inc